



Referee: REITER Moritz  
 Umpires: BARTH Benjamin / STREIT Enrico  
 Commissioner: EICHHORN Christian

Attendance: 1.892  
 Crailsheim, Arena Hohenlohe (3.000 Plätze), SO 14 NOV 2021, 20:30, Game-ID: 26693

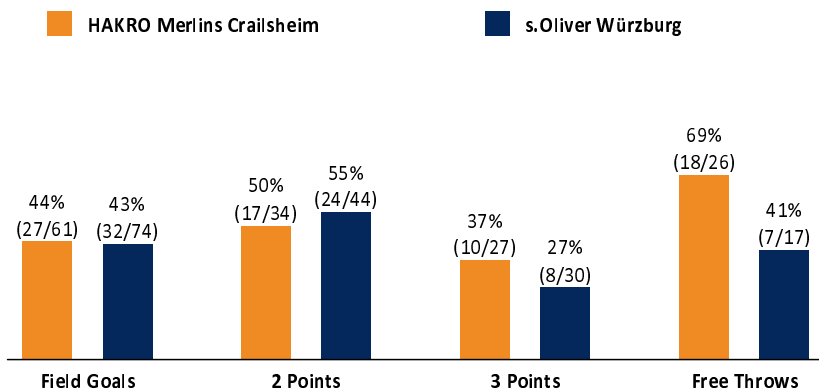
	Q1		Q2		Q3		Q4	
CRA	23	23	20	43	24	67	15	82
WUE	16	16	23	39	14	53	26	79

CRA - HAKRO Merlins Crailsheim (Coach: GLEIM Sebastian)

No.	Name	Min	PTS	2 Points	3 Points	Field Goals	Free Throws	OR	DR	TR	AS	ST	TO	BS	SB	PF	FD	EFF	+/-
*0	SHORTS T. J.	29:18	22	9/15 (60%)	0/3 (0%)	9/18 (50%)	4/7 (57%)	1	5	6	6	1	4		1	4	9	19	5
*1	LEWIS Jaren	25:37	11	4/6 (67%)	0/1 (0%)	4/7 (57%)	3/4 (75%)		2	2	1	2	1	2		2	2	13	8
2	SAVAGE Jared	7:21	0		0/1 (0%)	0/1 (0%)										1		-1	1
*3	STUCKEY Maurice	27:10	11	1/2 (50%)	3/8 (38%)	4/10 (40%)			3	3			2			3	1	6	-4
5	KOVACEVIC Aleksa	DNP																	
6	LASISI Elias	20:12	15	2/3 (67%)	3/5 (60%)	5/8 (63%)	2/3 (67%)		3	3	1	1	1	2		3	2	17	8
8	HARRIS Terrell	27:02	8	1/5 (20%)	2/4 (50%)	3/9 (33%)		1	4	5	4	1	1	1		1		12	-6
*9	BLECK Fabian	29:25	9	0/2 (0%)	2/3 (67%)	2/5 (40%)	3/4 (75%)	4	4	8	1	2	2			3	2	14	2
11	KINDZEKA Rene	DNP																	
12	KOVACEVIC Dejan	DNP																	
*15	RADOSAVLJEVIC Bogdan	25:51	5		0/2 (0%)	0/2 (0%)	5/6 (83%)	2	3	5		2				3	3	9	2
34	ARIRIGUZOH Richmond	8:04	1	0/1 (0%)		0/1 (0%)	1/2 (50%)	1		1	1	1				2	1	2	-1
Team / Coach									1	1								1	
Totals		200:00	82	17/34 (50%)	10/27 (37%)	27/61 (44%)	18/26 (69%)	9	25	34	14	10	11	5	1	22	20	92	3

WUE - s.Oliver Würzburg (Coach: WUCHERER Denis)

No.	Name	Min	PTS	2 Points	3 Points	Field Goals	Free Throws	OR	DR	TR	AS	ST	TO	BS	SB	PF	FD	EFF	+/-
4	BÖHMER Julius	DNP																	
7	KING Alex	7:40	3	0/1 (0%)	1/1 (100%)	1/2 (50%)			1	1	1		2				1	2	5
*11	GIELO Tomasz	25:37	11	2/4 (50%)	2/9 (22%)	4/13 (31%)	1/2 (50%)		3	3	1	1	2		2	3	2	4	-19
20	ALBUS Julian	DNP																	
21	SKELE Aigars	9:31	4	2/2 (100%)	0/1 (0%)	2/3 (67%)	0/1 (0%)	1	2	3	2					3	1	7	12
22	MOLLER Craig	22:54	13	5/7 (71%)	1/4 (25%)	6/11 (55%)		4	5	9	3			1		2		21	13
*23	RODRIGUEZ Desi	26:57	15	5/7 (71%)	1/2 (50%)	6/9 (67%)	2/2 (100%)	3	1	4	3	1	2		1	1	4	18	-1
*24	HUNT Cameron	23:22	5	1/4 (25%)	1/3 (33%)	2/7 (29%)			1	1	3	1	2		1	1		3	-6
33	JOHNSON Kerron	25:06	2		0/2 (0%)	0/2 (0%)	2/4 (50%)	1	3	4	3	2	2			4	7	5	10
34	HOFFMANN Felix	12:10	0	0/2 (0%)	0/1 (0%)	0/3 (0%)			3	3	2	1			1	2	1	3	1
*44	BUFORD William	30:33	18	6/12 (50%)	2/7 (29%)	8/19 (42%)		3	6	9	5		2		2	2	19	-14	
*65	STANIC Filip	16:10	8	3/5 (60%)		3/5 (60%)	2/8 (25%)	4	2	6	1	1	1			3	4	7	-16
Team / Coach								4	3	7								7	
Totals		200:00	79	24/44 (55%)	8/30 (27%)	32/74 (43%)	7/17 (41%)	20	30	50	24	7	13	1	5	21	22	96	-3



CRA	WUE
9 / 25 / 34	20 / 30 / 50
14	Rebounds OR/DR/TR
22	Assists
20	Fouls
11	Fouls Drawn
10	Turnovers
10	Steals
28	Points in the Paint
1	Second Chance Points
20	Fast Break Points
16 (69:53)	Biggest Lead
9-0 (9:2)	Biggest Scoring Run
	Lead Changes: 1
	Times Tied: 3



**EASYCREDIT-BBL.DE**

Alle offiziellen Statistiken der easyCredit BBL, Daten, Rekorde uvm. gibt es auf easyCredit-BBL.de! Und für unterwegs: die neue offizielle Liga-App, kostenfrei für iOS und Android.



**MAGENTASPORT.DE**

Keinen Korb mehr verpassen - Alle Spiele der easyCredit Basketball Bundesliga und des MagentaSport BBL Pokals live auf MagentaSport.de

**LEGEND**  
 Min Minutes Played    DR Defensive Rebounds    AS Assists    BS Blocked Shots    PF Fouls    +/- Plus-Minus-Rating  
 DNP Did Not Play    OR Offensive Rebounds    ST Steals    SB Shots Blocked    FD Fouls Drawn    \* Starters  
 PTS Points    TR Total Rebounds    TO Turnovers    EFF Efficiency = ((PTS + TR + AS + ST + BS) - ((FGA - FGM) + (FTA - FTM) + TO))